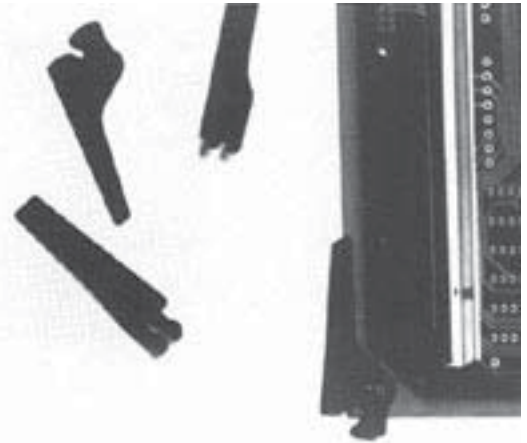


Calmark offers the Series 107-50 Card Inserter-Extractor for safe and easy insertion and extraction of PC cards in the severest applications of high insertion and extraction forces.

**FEATURES:**

- "Ultra strong" lever action design overcomes insertion and extraction forces of highest possible limits.
- Narrow width -- .290 inches (7.37).
- Actuates from a simple "U" channel form.
- Mounting detail on card retrofits other industry standards.
- No chamfer required on corner of card.



**MATERIALS & FINISH**

**Extractor** - Aluminum alloy 6061-T6.  
Black Anodize per MIL-A-8625, Type II, Class 2.

*For Conductive Finish, add prefix "C" to part number (C107-50).  
Clear chemical film per MIL-5541, Cl 3.*

**Roll Pin:** Stainless Steel, 3/32" (2.38)dia. x 1/4" (6.4) long.  
Furnished with each inserter-extractor.

*For Pre-Started Assembly Pin, add prefix "P" to part number (P107-50)*

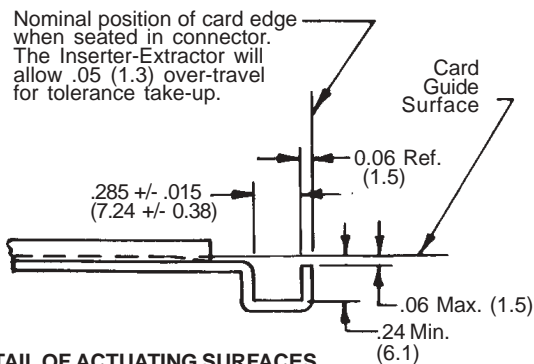
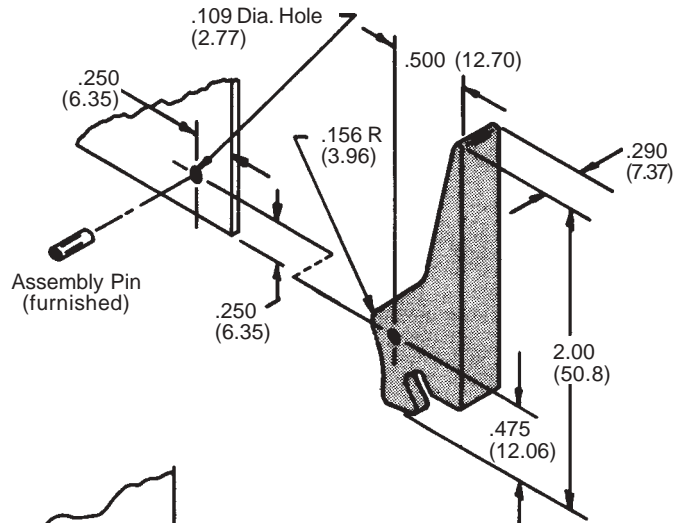
**TOLERANCES:** .xxx = +/- .010, .xx = +/- .02  
(.xx=+/- 0.25, .x=+/- 0.5)

**APPLICATION DATA:**

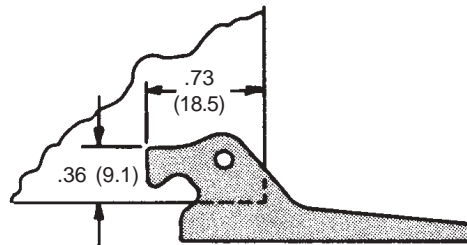
Two inserter-extractors are required per board.  
Provides insertion and extraction travel of .35(8.9)  
minimum with a mechanical advantage of  
approximately 4.5 : 1.

**TABULATION**

| PART NO. | Card Thickness |
|----------|----------------|
| 107-50   | 1/16" (1.6)    |
| 107-50-3 | 3/32" (2.4)    |
| 107-50-4 | 1/8" (3.2)     |



**DETAIL OF ACTUATING SURFACES**  
Required on top and bottom guide plates of Calmark fabricated card cages.



**Card Clearance required when rotated.**