

Calmark offers the new Series 227 Channel Mounted "Card-Lok". This new design consists of three (3) segment Card-Lok retainer mounted in its own individual chassis mountable heatsink channel.

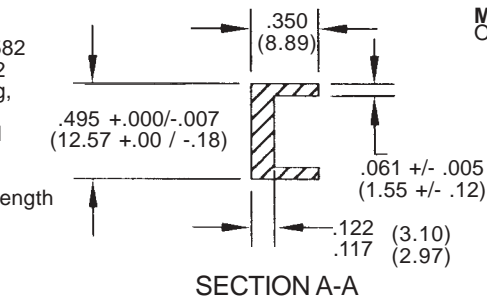
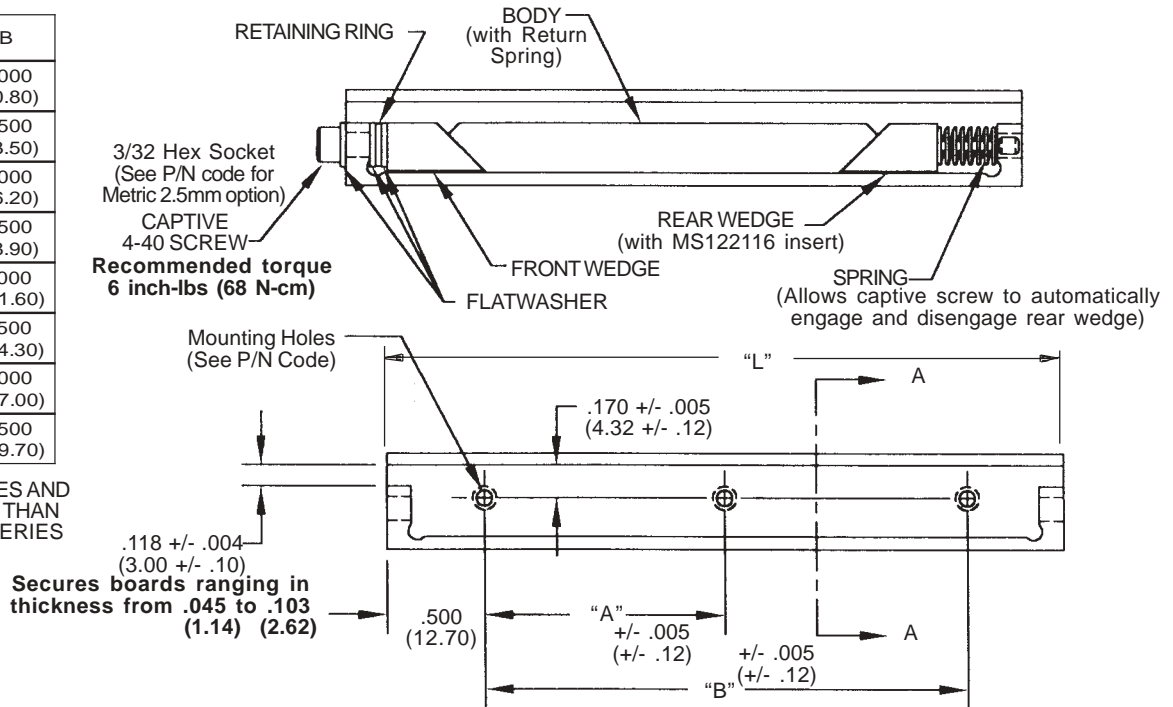
FEATURES:

- **Self contained Card-Lok / Heatsink Channel**
Three (3) segment Card-Lok mounted in an individually mountable heatsink channel.
- **Maximum Reliability**
Screw-actuated wedge action locks PC card in place.
- **Maximum Thermal Transfer**
Wedge action design provides maximum contact between thermal paths on PC card and the heat sinking surface.
- **Maximum Resistance to Shock & Vibration**
Wedge action design locks PC card in place to provide maximum resistance to shock and vibration.
- **Zero Insertion & Extraction Forces**
Screw actuation provides zero insertion and extraction force on PC card.
- **Design Flexibility**
Special lengths, finishes or other design variations available on request.



L	A	B
3.00 (76.2)	1.000 (25.40)	2.000 (50.80)
3.50 (88.9)	1.250 (31.75)	2.500 (63.50)
4.00 (101.6)	1.500 (38.10)	3.000 (76.20)
4.50 (114.3)	1.750 (44.45)	3.500 (88.90)
5.00 (127.0)	2.000 (50.80)	4.000 (101.60)
5.50 (139.7)	2.250 (57.15)	4.500 (114.30)
6.00 (152.4)	2.500 (63.50)	5.000 (127.00)
6.50 (165.1)	2.750 (69.85)	5.500 (139.70)

FOR 5 PIECE ASSEMBLIES AND ASSEMBLIES LONGER THAN 7.00 (177.8) SEE 228 SERIES



Unit: INCH (MM)

MATERIALS:

- Channel, Bodies, Wedges:
Aluminum Alloy, 6061-T6
ASTM-B221
- Screw:
Stainless Steel, ASTM-A582
Passivated per Mil-S-5002
- Flat washers, Retaining Ring,
and Spring:
Passivated Stainless Steel

WEIGHT:

0.22 oz. (6.2 g) per inch of length

TOLERANCES:

.XXX +/- .010 (.XX +/- 0.25)
.XX +/- .02 (.X +/- 0.5)

PART NO. CODE:

- M A 227 R - 5.00 T4**
- Metric 2.5mm hex socket option
Omit for standard 3/32 size hex
- Finish options**
No prefix = Chemical Film per Mil-C-5541
"A" = Black Anodize per MIL-A-8625, Type II, Cl. 2
"HA" = Black Hard Anodize MIL-A-8625, Type III, Cl. 2
"EN" = Electroless Nickel per MIL-C-26074, Gr. B, Cl. 4.
- Mounting Options**
"T4" Indicates 4-40 tapped holes
"TM3" Indicates M3 tapped holes
- Assy Length**
"L" dim in decimals (see tabulation)
- Basic Series No. for assembly using one body segment as shown. (See Series 228 for assemblies using 3 body segments)
- "R" = Right hand assy (shown)
"L" = Left Hand assy (opposite)