

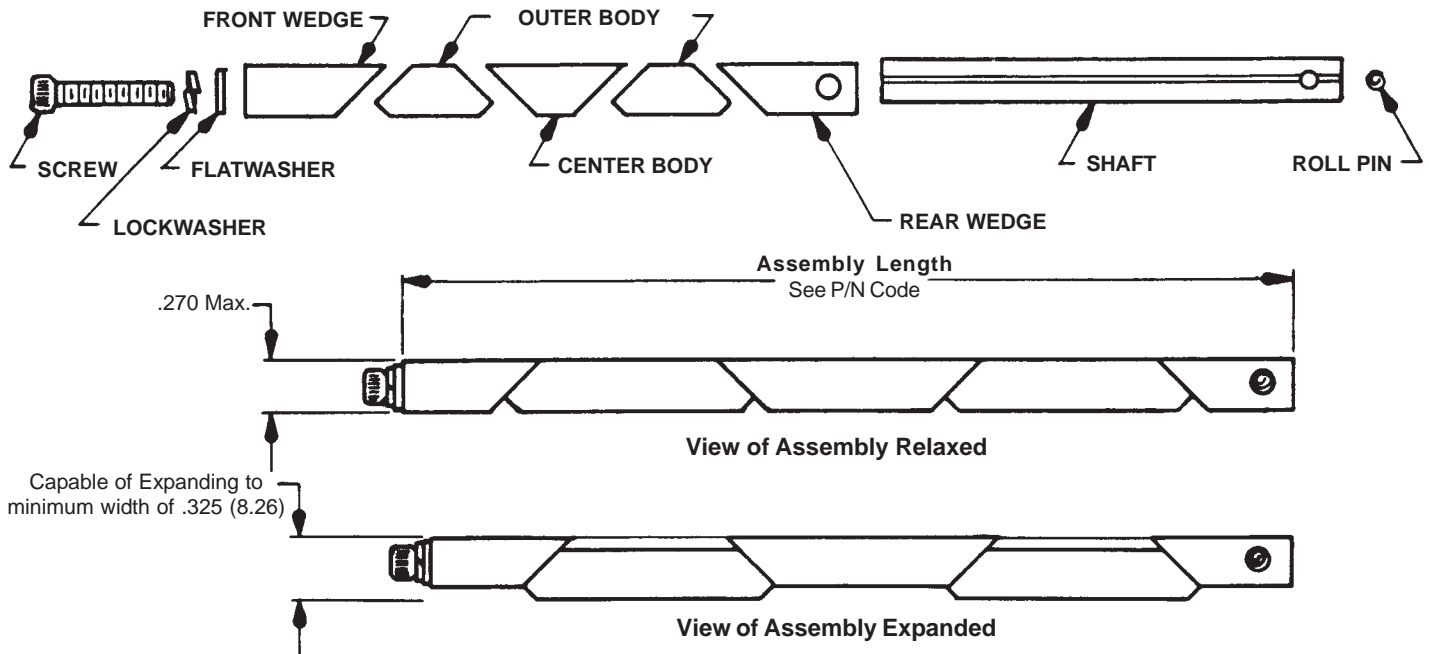
Calmark offers the advance design Series 260 "Card-lok" retainer for cold plate/heat exchanger applications. This totally unique design incorporates design advancements that provide increased thermal transfer, easy insertion, lighter weight and lower costs. Conforms to DESC 89024.

FEATURES:

- *Maximum uniform clamping force.*
- *Increased thermal transfer*
- *Maintains wedge and body alignment for easy insertion.*
- *Captivated rear wedge.*
- *Choice of screw head style.*
- *Dimensionally compatible with Series 225 & 245.*
- *Lighter weight.*
- *Lower cost -- Faster delivery.*
- *Special lengths, finishes or other design options available on request.*

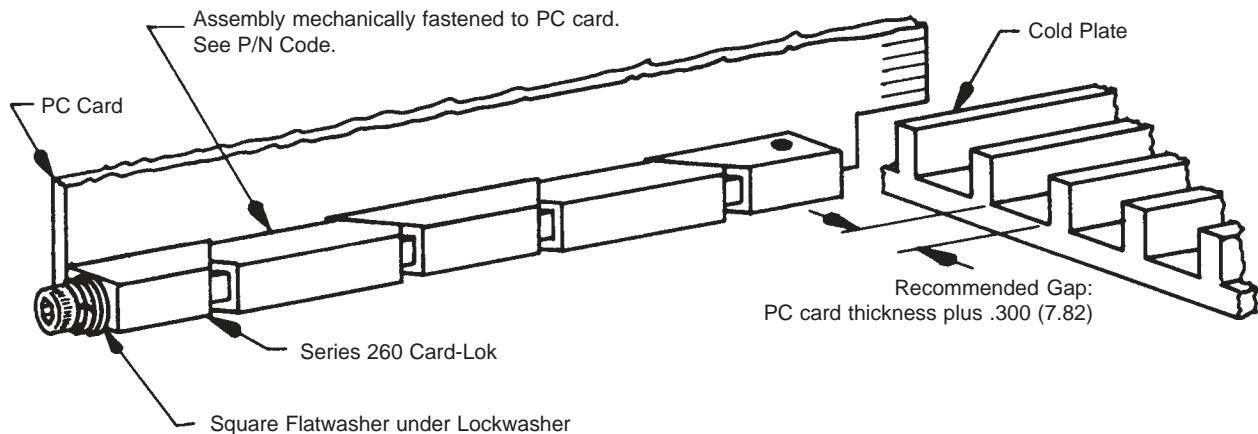


U.S. PATENT NO. 4,819,713
U.K. PATENT NO. 2,211,546
ISRAEL PATENT NO. 86120
GERMAN PATENT NO. 3890343



APPLICATION DATA:

Recommended Torque -- 6 in-lbs (68 N-cm)
If Lock Element option add 1 to 2 in-lbs (11 to 22 N-cm)
Weight of Assembly -- Assembly length x .085 oz. (2.41g)



HARDWARE

Screw NAS1352CO4 Series
4-40 socket head cap screw (2.36) 3/32 HEX
(Optional metric M3 screw 300 Series Stainless
Steel, Passivated, 2.5mm across flats.)

Roll Pin - MS39086-125

Flatwasher P/N 51035
304 Series CRES per ASTM-A240
(.250"sq., .115" I.D. x .048"thk.)
(6.35sq., 2.92 I.D. x 1.22thk.)
Passivate per MIL-S-5002.

Lockwasher MS35338-135

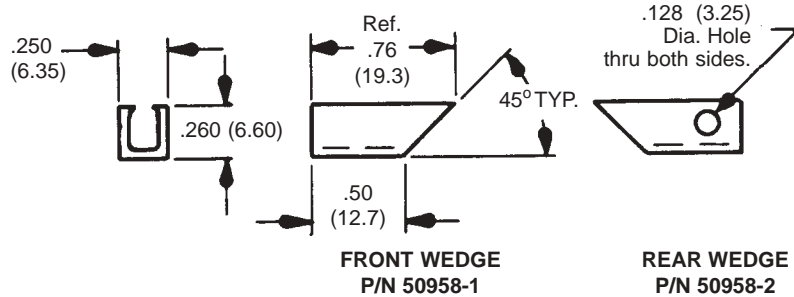
WEDGES

P/N 50958-1 (FRONT)
P/N 50958-2 (REAR)

MATERIAL: Aluminum Alloy
6061-T6 per ASTM-B221

FINISH: See Part No. Code

TOLERANCES: .xxx = +/- .010, .xx = +/- .02
(.xx=+/- 0.25, .x= +/- 0.5)



BODIES

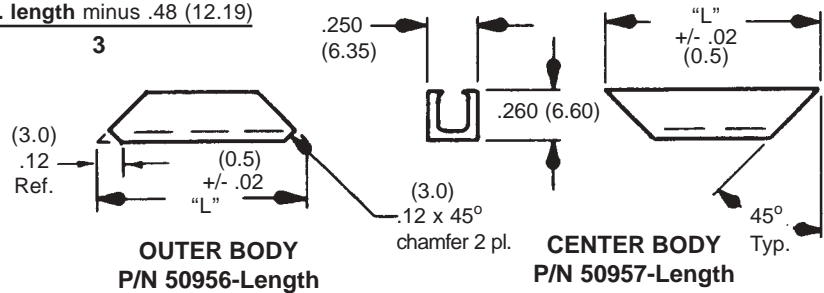
P/N 50956-Length (OUTER)
P/N 50957-Length (CENTER)

MATERIAL: Aluminum Alloy
6061-T6 per ASTM-B221

FINISH: See Part No. Code

TOLERANCES: .xxx = +/- .010, .xx = +/- .02
(.xx=+/- 0.25, .x= +/- 0.5)

"L" Dim. = $\frac{\text{Assy. length minus .48 (12.19)}}{3}$



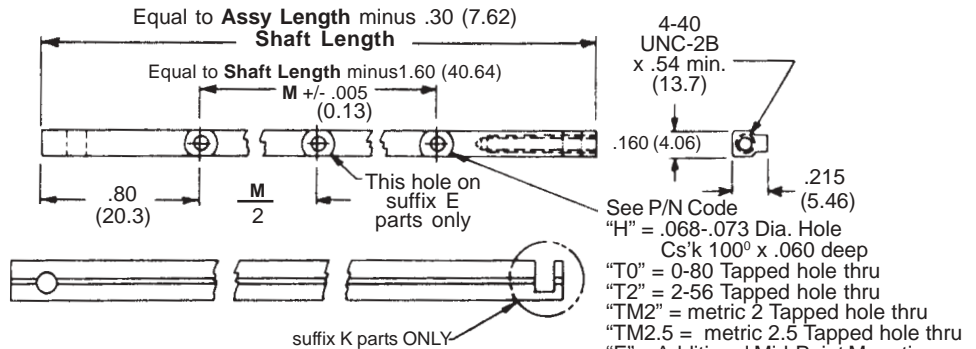
SHAFT

P/N 50959-Length-Mounting Hole Style

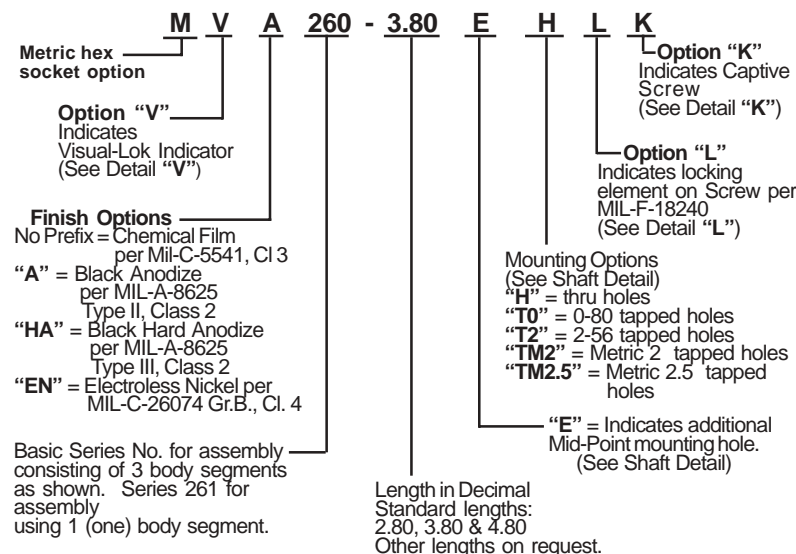
MATERIAL: Aluminum Alloy
6061-T6 per ASTM-B221

FINISH: See Part No. Code

TOLERANCES: .xxx = +/- .010, .xx = +/- .02
(.xx=+/- 0.25, .x= +/- 0.5)

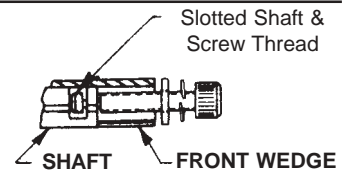


PART NO. CODE

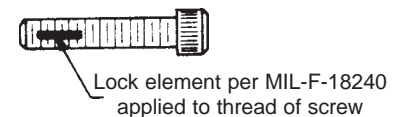


OPTIONAL DETAILS

DETAIL "K" (suffix)
provides captive screw



DETAIL "L" (suffix)
provides prevailing torque for resistance to loosening from shock and vibration



DETAIL "V" (prefix)
provides visual lock indicator

