

Calmark offers the feature of Ejection of the Board Module Assembly with its Series E225 "Card-Lok" Retainer. The Series E225 provides initial ejection of the Board Module Assembly without damaging circuits, components or bending connector pins.

FEATURES

- Safe and Easy Ejection of Board Module Assembly – Screw actuation produces a jacking force that disengages the Board Module Assembly from its mating connector
- Maximum Reliability – Screw-actuated wedge action locks Board Module Assembly in place
- Maximum Thermal Transfer – Wedge-action design provides maximum contact between thermal path on Board Module Assembly and the heat sink surface
- Maximum Resistance to Shock & Vibration – Wedge action design locks Board Module Assembly in place to provide maximum resistance to shock and vibration
- Zero Insertion & Extraction Forces – Screw actuation provides zero insertion and extraction force on Board Module Assembly
- Design Flexibility – Special lengths, finishes or other design variations available on request

MATERIALS & FINISHES

BODY & WEDGES

Aluminum Alloy 6061-T6 per ASTM-B221 (See P/N Code for finish options)

SCREW

Stainless Steel per ASTM-A582 or QQ-S-763. Passivate per MIL-S-5002

RETAINER RING & THREADED INSERT

Stainless Steel per ASTM-A582 or QQ-S-763. Passivate per MIL-S-5002

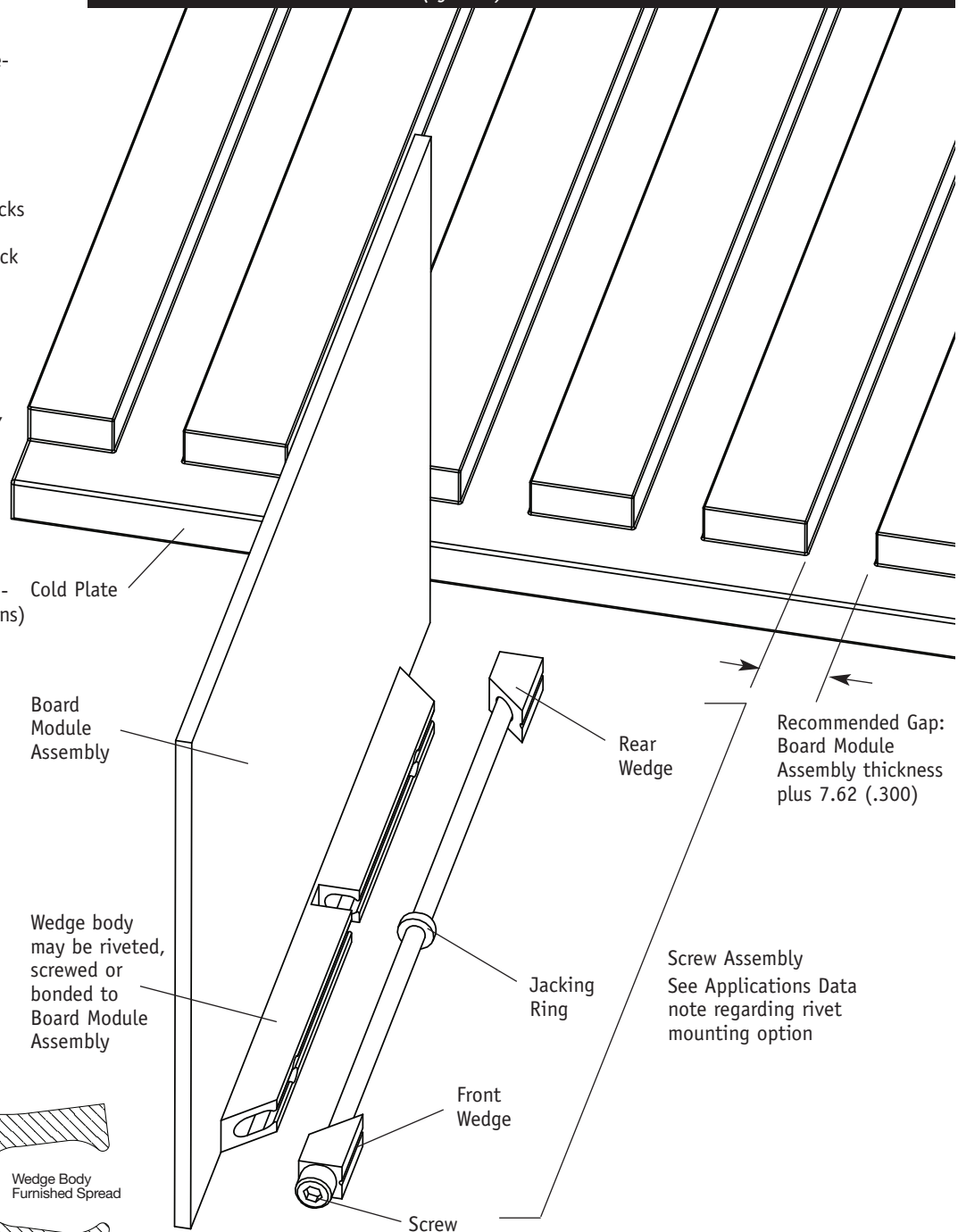
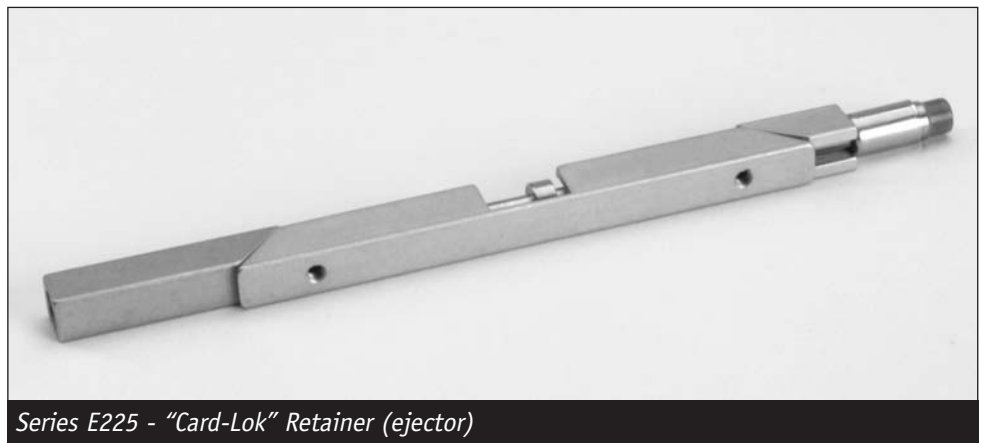
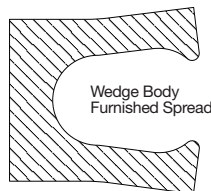
APPLICATION DATA

All mounting options except for "H" (rivet mouting), parts are completely assembled for shipping.

For "H" (rivet) Mounting Option, the screw assembly and wedge body are shipped unassembled.

Assemble parts as follows:

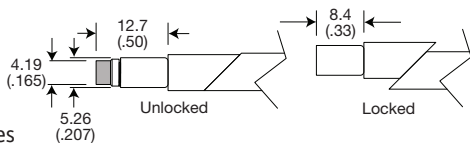
1. Rivet Wedge Body to Printed Circuit Board
2. Insert Screw Assembly into Wedge Body
3. Collapse Wedge Body to captivate screw assembly



OPTION PREFIX

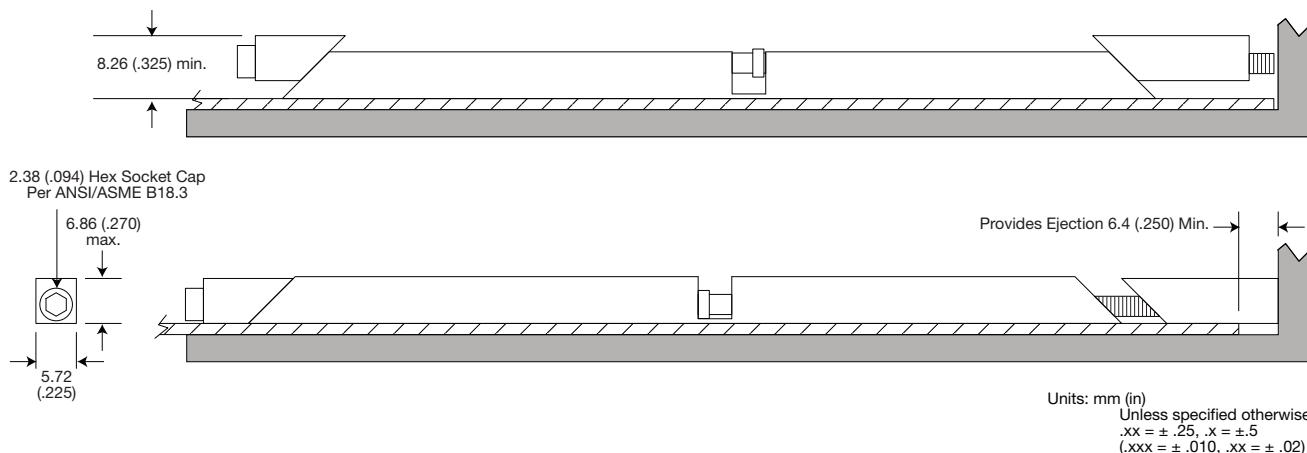
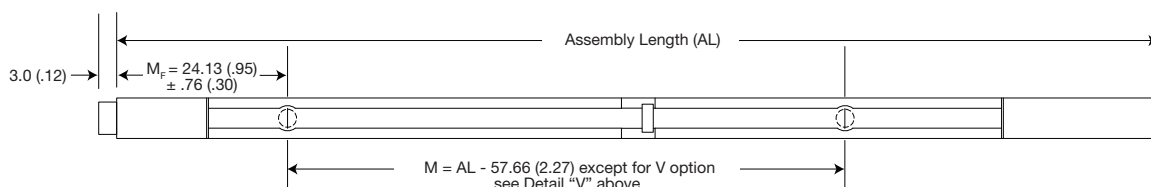
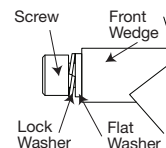
Detail "V"

Provides visual lock indicator. This option changes M_F to 15.5 (.61) and M to equal AL - 45.72 (1.80)



Detail "W"

Provides added resistance to loosening from shock and vibration.



Part Number Code Series E225 Card-Lok Three Piece

Prefix options

Metric Screw Head M2.5 Hex Drive _____ **M**
 Standard Screw Head 3/32 Hex Drive _____ [blank]
 Lock and Flat Washer _____ **W**
 None _____ [blank]
 Visual Indicator _____ **V**
 No Visual Indicator _____ [blank]
 Black Anodize _____ **A**
 or choose from Finish Table _____ see table

Suffix options

Assembly length in inches. Standard lengths _____ length.xx
 range from 71.12 (2.80) to 329.9 (12.99).
 Other lengths available upon request
 Mounting Options - holes for rivet mounting _____ **H**
 or choose from Mounting Method Table _____ see table

Part Number Code Example:

WVE225-4.80T2

Series E225 Ejecting Card-Lok three piece 121.9 (4.80) long with Lock and Flat Washer, Visual Indicator, Gold Chemical Film Finish, mounting holes drilled and tapped for 2-56 screw.

FINISH TABLE	
Code Letter	Finish
[blank]	Chemical Film per Mil-C-5541 Class 1A, Gold
"R"	Chemical Film per Mil-DTL-5541 Class 3, Type II, Clear
"A"	Black Anodize per Mil-A-8625 Type II, Class 2
"HA"	Hard Black Anodize per Mil-A-8625 Type III, Class 2
"EN"	Electroless Nickel per Mil-C-26074 Class 4, Grade B, Bright

MOUNTING METHOD TABLE	
Code Letter	Method
[blank]	No mounting holes
"H"	Rivet Mounting \varnothing 1.70 (.067) hole with 3.96 (.156) counterbore x 5.08 (.200) deep and 100° x 3.56 (.140) countersink.
"T0"	0-80 tapped hole
"T2"	2-56 tapped hole
"TM2"	M2 x 0.40 tapped hole
"TM2.5"	M2.5 x 0.45 tapped hole